



Royal Agricultural Society of NSW

# *Schedule*

---

## Sydney Royal Rabbit Show

11-22 April 2025  
Sydney Showground  
Sydney Olympic Park  
[www.rasnsw.com.au](http://www.rasnsw.com.au)

*Sydney Royal*  
SINCE 1822



# HISTORY OF THE SYDNEY ROYAL RABBIT SHOW

## *Rabbit Fanciers Society*

*of New South Wales Inc*

## *Sydney Royal Rabbit Show*

The Rabbit Fanciers Society of NSW inc in conjunction with the Royal Agricultural Society of NSW Inc are both delighted to invite exhibitors Australia wide to attend the 2025 Sydney Royal Rabbit Show held on Thursday the 17th of April 2025 at the Sydney Royal Easter Show in the pet pavilion, Sydney Showground, Sydney Olympic Park, NSW 2127.

In 1858 rabbits were judged in the poultry competition up until 1882 when the farmers of NSW decided rabbits were becoming a bit of pest, so they stopped the competition, but in 1997 rabbits came back to the show and have been leaping into the hearts of Showgoers ever since. With many issues damaging the rabbit fancy over many years, numbers dwindled from over 200 exhibits over a two-day show back in 2012, down to just 50 rabbits in a single day show in 2017.

In 2018 the Rabbit Fanciers Society of NSW took on the challenge to make the Sydney Royal Rabbit show the centrepiece of the NSW rabbit fancy and to bring it back to the premier event of the fancy again. With success in their first year, RFS managed to bring numbers back up to 166 exhibits in 2018 with judge Mr John Porritt from Victoria. Again, more success followed in 2019 with interstate exhibitors attending making up 209 entries for judge Sarah Van Steenis from Tasmania and 65 Young Stock entries for Sarah's Mother, Debbie Pulford.

In 2020 we seen the Covid pandemic hit drastically making many changes in the world including the first cancellation of the Sydney Royal Show since the Spanish flu pandemic back in 1919. The show was cancelled a month before the show was meant to start with UK judge Mr Phil Batey and 20 exhibitors entered with over 250 exhibits as well as the whole agricultural community was affected.

In 2021 we tried to bounce back with many new limitations, including interstate travel still not an option, having 144 entries for judge Mr Paul Young from NSW.

2022 brought more hope of bringing the show back to its premier level, having 213 entries for a return of judge Mr John Porritt but some scratchings mainly due to RVHD without the best vaccine available in the country.

In 2023 with Filavac vaccine in the country, it gave the future of the rabbit fancy some hope. Mr Ryan Page came from Western Australia to judge with 167 entries.

2024 was a huge success with UK judge Mr Phil Batey that we missed out on seeing back in 2020 when the show was cancelled. Phil brought a wealth of knowledge with him to share with exhibitors and many exhibitors travelled great distances to get the chance to show under Phil. There was 344 rabbits entered with a total of 264 in attendance making it the greatest rabbit show held at the Sydney Royal. We hope that all members of the rabbit fancy Australia wide will consider attending the Sydney Royal Rabbit show in 2025 bringing quantity and quality to the showpiece show of NSW making it once again the premier event for the state.

### Past Winners of the Sydney Royal Rabbit Show held by Rabbit Fanciers Society.

2018 – BIS Chonico Bunnies Rambo, Silver Fox Black Adult. RupBIS Jackalope Montague. Std Rex Ermine Adult. 3rdBIS Jive Bunnies Fire N Ice, Mini Lop Black Adult.

2019 – BIS Jackalope Filomena, Polish Blue Otter Adult. RupBIS Primeka Montana, Dwarf Lop Agouti Junior. 3rdBIS Jackalope Margeaux, Std Rex Ermine Adult.

2021 – BIS Jackalope Amadine, Std Rex Ermine Adult. RupBIS Dusti's Bunnies Cant Steel This, Flemish Intermediate Steel Adult. 3rdBIS Jackalope Affonzo, Dwarf Lop Agouti Adult.

2022 – BIS Jackalope Hymera, Satin Squirrel Adult. RupBIS Jackalope Celine, Std Rex Ermine Adult. 3rdBIS Jackalope Josephine, Std Rex Ermine Adult.

2023 - BIS Cloverfield Mr Nice Guy, Netherland Dwarf Himalayan Junior. RupBIS Jackalope Monique, Std Rex Ermine Adult. 3rdBIS Jackalope Melka, Polish REW Adult.

2024 – BIS Ebony Grove Barry, Netherland Dwarf Sooty Fawn Junior. RupBIS JiveBunnies Devil in Disguise, Mini Lop Black Otter Junior. 3rdBIS Heavens Gift Hear the Angels Sing, Jersey Woolly REW Adult.

# RABBIT FANCIERS SOCIETY OF NSW INC

PROUDLY PRESENTS THE

## 2025 SYDNEY ROYAL RABBIT SHOW



**SAVE THE  
DATE!!**

**JOIN US IN 2025**

**5 STAR SYDNEY ROYAL**

**With**

**TAS JUDGE**

**MRS SARAH FALKNER**

**STANDING IN FOR THE LATE  
MR ROWLAND MCDONNELL**

**Venue: Hall 3 Pavilion,  
Sydney Showground.**

**START GETTING READY FOR 2025**  
[rfs\\_entries@yahoo.com.au](mailto:rfs_entries@yahoo.com.au)



**DATE: Thursday  
17th April 2025**



## In Memory of the Late RFS President

### Mr Rowland McDonnell (NSW)



With interest in the fancy starting with a couple of pet Rex, it just blew up when I acquired some Silver Fox and Dutch. Then, looking at some stock at a Sydney breeder's stud, I saw my first Tan and the love affair started. Acquiring a trio after some time, these three breeds have been the foundation of Chonico Bunnies ever since. Over the years I have also had many other breeds including Sables, Smoke Pearls, Chinchillas, Californians, Satins, Rex, Mini Rex, Netherlands, Thriantas, Mini Lops and Polish, having been fortunate enough to breed several of them to BIS. My main breeds for several years now have been the Tans, Dutch, Silver Fox and Polish while I have recently added Thriantas back along with acquiring Marten Sables, both classed as rare.

Becoming involved, I became a member of RBA of NSW and RFS of NSW, having held committee positions in both clubs over the years and been president of both, still holding the position at RFS of NSW for some 10 of the last 12 years. My interest in judging arose as an opportunity to put something back into the fancy from which I gained much satisfaction and noting that judges were not plentiful. I went through training being overseen by John Porritt to whom I owe a great deal for his acceptance when the opportunity was basically eliminated by the original trainer I was to have leaving the fancy abruptly. I trained with some of the most experienced judges of the time including Deb Sletten, Christine Toyer and Christine Carter, all of whom I appreciate for their assistance and guidance. I currently train judges which I see as a benefit to the fancy as well as being something that I gain satisfaction from as they achieve their goals.

As a judge, I have travelled extensively and experienced the fancy from so many varying aspects. I have been afforded the opportunity to officiate for every club currently in Australia as well as almost all that are no longer operating. I have had the privilege of officiating on two occasions in New Zealand, one being the 5\* South Island National Championships as well as the Launceston, Geelong and Hobart Royals. To be offered the opportunity to officiate for interstate and international shows is, I feel, a satisfying recognition and acceptance. The offer to judge the 2025 Sydney Royal however, now recognised as one of the showpieces of the rabbit fancy, is, I consider, to be the pinnacle of an extensive and very enjoyable journey over many years.

I am very much looking forward to this show, to meeting everyone there and handling what I am sure will be an extensive collection of very fine stock.

Regards, Mr Rowland McDonnell

# Introducing the 2025 Sydney Royal Rabbit Show 5 Star Judge

## Mrs Sarah Falkner (TAS)



It is with many mixed emotions but mainly an incredible sense honor I have agreed to fill in for my dear friend Rowland and officiate the 2025 Sydney Royal Rabbit Show, an event so dear to Rowlands heart and one he was proudly looking forward to judging this year.

I first met Rowland back in 2010 when we connect over Silver Foxes. Soon realizing a mutual love for our Rare Varieties we shared many in-depth conversations over the years regarding breeding, stock selection, judging and preserving these breeds. Rowland has always been a huge supporter of myself both as a breeder, judge and friend. Always there with words of encouragement, care and support throughout many of my life's challenges both personally and professionally.

Rowland had a vision of a united Fancy, a vision I know myself amongst others will continue to pursue. To quote a comment Rowland made in March 2024 on a post of mine after my return to exhibition post calici and my commenting on the support of trusted friends who helped me rebuild " It is a profound example of just what a great institution our fancy can be and I really believe it is, with our dwindling numbers, becoming a better, more cohesive and more co-operative place to be". It is my hope that this be the legacy Rowland leaves, respect paid to those even with differing opinion and a united fancy that works cohesively to a common goal, the betterment of the Australian Rabbit fancy. I am both privileged and humbled to represent today, I hope I do you proud.

Again, my heartfelt condolences to Rhonda, Rowland's family and friends.

Regards, Mrs Sarah Falkner

# SHOW DETAILS

**Date of Judging:** Tuesday the 17th of April 2025.

**Judge:** Mrs Sarah Falkner (TAS) 5 Star Championship, standing in for the late Mr Rowland McDonnell (NSW)

**Entry Fees:** Minimum entry of \$25 will be applied to each exhibitor to cover entry pass to the show (1-5 entries/classes).

Main Show 5 star: \$5 per rabbit per class.

Entries will be capped at \$80 each exhibitor (16 classes or more)

**Show Manager:** Loren Stavens

**Vetting in:** Between 6.30am and 7.30am. All exhibits must be vetted in and penned by 8.00am. Vet in opens at 6.30am please line up as you arrive.

**Bump in:** Delivery of exhibits between 6.30am and 8am only.

Due to venue requirements the bench slip will not permit entry into the 2025 show. To deliver exhibits during the specified delivery times, each exhibitor will need a bench slip and dash slip to permit entry for a vehicle and exhibits, and all persons inside the vehicle will need to have a valid show entry ticket to enter the site. Vehicles must be removed from site immediately after the exhibits have been delivered. Vehicles that remain on the site illegally after 8am will be infringed. All exhibitors and passengers will need a valid show entry ticket to re-enter the site on foot via the designated pedestrian entries.

**Parking:** Parking passes to be purchased by the exhibitor before the day of judging. Tickets must be pre purchased and printed out online for \$30 for P1, P3 and P4. Please ensure you buy your parking tickets early. [www.sydneyolympicpark.com.au/parking/](http://www.sydneyolympicpark.com.au/parking/)

**Entry Passes:** Maximum of Two, One day entry passes will be supplied per one to four exhibits and a maximum of three, One day entry passes per exhibitor per five or above exhibits.

**Bump out:** No exhibits shall leave the pavilion until 5pm unless permission is given by the show manager. Passes will be given to exhibitors to enter the pick up zone on departure.

**Entries close:** Saturday the 8<sup>th</sup> March 2025 at 8pm. Entries to be in word format only and emailed to [rfs\\_entries@yahoo.com.au](mailto:rfs_entries@yahoo.com.au)

**NO LATE ENTRIES WILL BE ACCEPTED.**

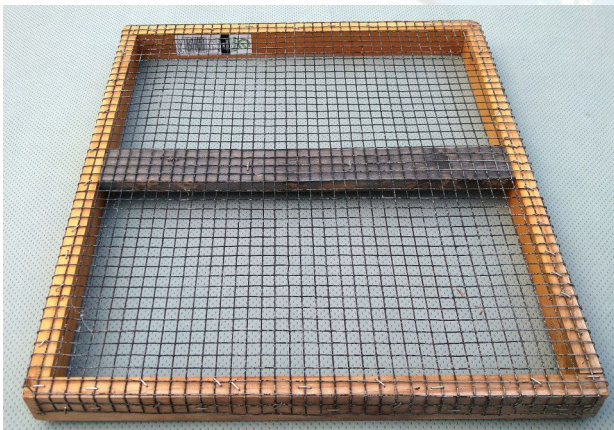
**Payment of entries:** Entry fees are to be paid with entry. Entries will not be accepted without receipt of payment. Monies are to be paid to RFS account BSB 082 365 A/C 692053161. Receipt for payment and reference must accompany entry form. Payment on the day of judging is not accepted.

**Scratchings:** No refund will be given for rabbits scratched after entries have closed. All scratchings and withdrawals must be in writing to the show secretary no later than 8am on the day of judging otherwise a \$40 fine will apply to each exhibit.

**Grooming:** Power will be available for grooming exhibits, bring your own equipment and please clean up your own mess. No grooming to take place after judging has commenced unless permission is given by the show manager.

**Vaccination:** The Rabbit Fanciers Society of NSW inc highly recommends all exhibitors to vaccinate their exhibits. It is not a condition of entry. Please state on entry form or day before the show if exhibits have been recently vaccinated with Filavac, consideration by Judge will be given for small patch of missing fur, redness at injection site or small sub-cutaneous lump under the skin due to recent vaccination if stated by the exhibitor prior to the show. Under no circumstances can you identify this to the judge on the day.

**Pavilion:** The hall is open to the public between 9am and 5pm. Judging will start promptly at 8.30am. Only pre selected **Official Stewards** are allowed into the judging area between 8.30am and 5pm. Exhibitors may only enter the judging area if permission is given by the show manager.



Cage base dimension 48x54cm



**Bedding:** Cages will be provided on site for exhibits. Wire inserts, puppy pads and mats are recommended. No shavings, litter or straw to be used. Exhibitors must clean their pens at the end of the day, wet wipes are recommended. Cage base dimension 48x54cm. Carry cages must be placed under pens during the show. If entry numbers exceed the maximum amount of pens available then smaller exhibits will need to be in show cages to allow all exhibits to be shown.

**Water and Food:** Water must be available to exhibits at all times. No hay or straw to be bought to the venue. Pellets are recommended for long travelling exhibits.

The Royal Agricultural Society of NSW (RAS) General Regulations form part of the conditions of entry. The Sydney Royal Rabbit Show is held under the Rules and Regulations of the Royal Agricultural Society of New South Wales (ABN 69 793 644 351) and The Rabbit Fanciers Society Of NSW Inc (ABN 80 071 841 638). Breeds are judged under British Rabbit Council (BRC) Breed Standards and Australian National Rabbit Council (ANRCI) standards.

# RABBIT FANCIERS SOCIETY



## OF NSW INC

DATE OF SHOW:  
THURSDAY 17th  
APRIL 2025



## AGE GROUPS

**KITTENS = 10 - 14 Weeks of age.**

**Born between 10th Jan 2025 and 6th Feb  
2025**



**JUNIORS = 14 weeks - 5 months of age.**

**Born between 18th Nov 2024 and 9th Jan  
2025**



**ADULTS = Over 5 months of age.**

**Born on or before 17th November 2024**

**ENTRIES CLOSE 8PM SATURDAY 8th March 2025**





**RABBIT FANCIERS SOCIETY OF NSW INC**

| <b><u>FANCY SECTION</u></b> |   |           |            |           |
|-----------------------------|---|-----------|------------|-----------|
| <b>BREED</b>                | <b>COLOUR</b>   | <b>K</b>  | <b>J</b>   | <b>A</b>  |
| <b>ENGLISH ANGORA</b>       | <b>REW</b>  | <b>1</b>  | <b>2</b>   | <b>3</b>  |
|                             | <b>SELF</b>   | <b>4</b>  | <b>5</b>   | <b>6</b>  |
|                             | <b>SHADED</b>   | <b>7</b>  | <b>8</b>   | <b>9</b>  |
|                             | <b>ALL OTHER COLOURS</b>  | <b>10</b> | <b>11</b>  | <b>12</b> |
| <b>DUTCH</b>                | <b>SELF ( Black,blue,lilac,chocolate)</b>   | <b>13</b> | <b>14</b>  | <b>15</b> |
|                             | <b>ALL OTHER COLOURS</b>  | <b>16</b> | <b>17</b>  | <b>18</b> |
| <b>DUTCH</b>                | <b>TRI COLOUR</b>   | <b>19</b> | <b>20</b>  | <b>21</b> |
| <b>ENGLISH</b>              | <b>ALL COLOURS</b>  | <b>22</b> | <b>23</b>  | <b>24</b> |
| <b>HARLEQUIN</b>            | <b>MAGPIE</b>   | <b>25</b> | <b>26</b>  | <b>27</b> |
|                             | <b>ALL OTHER COLOURS</b>  | <b>28</b> | <b>29</b>  | <b>30</b> |
| <b>NETHERLAND DWARF</b>     | <b>REW</b>  | <b>31</b> | <b>32</b>  | <b>33</b> |
|                             | <b>SELF</b>   | <b>34</b> | <b>35</b>  | <b>36</b> |
|                             | <b>SHADED</b>   | <b>37</b> | <b>38</b>  | <b>39</b> |
|                             | <b>AGOUTI</b>   | <b>40</b> | <b>41</b>  | <b>42</b> |
|                             | <b>TAN PATTERN</b>  | <b>43</b> | <b>44</b>  | <b>45</b> |
|                             | <b>ALL OTHER COLOURS</b>  | <b>46</b> | <b>47</b>  | <b>48</b> |
| <b>POLISH</b>               | <b>REW</b>  | <b>49</b> | <b>50</b>  | <b>51</b> |
|                             | <b>SELF</b>   | <b>52</b> | <b>53</b>  | <b>54</b> |
|                             | <b>SHADED</b>   | <b>25</b> | <b>56</b>  | <b>57</b> |
|                             | <b>AGOUTI</b>   | <b>58</b> | <b>59</b>  | <b>60</b> |
|                             | <b>TAN PATTERN</b>  | <b>61</b> | <b>62</b>  | <b>63</b> |
|                             | <b>ALL OTHER COLOURS</b>  | <b>64</b> | <b>65</b>  | <b>66</b> |
| <b>TAN</b>                  | <b>BLACK-CHOCOLATE</b>  | <b>67</b> | <b>68</b>  | <b>69</b> |
|                             | <b>BLUE-LILAC</b>   | <b>70</b> | <b>71</b>  | <b>72</b> |
| <b>THRIANTA</b>             | <b>RED</b>  | <b>73</b> | <b>74</b>  | <b>75</b> |
| <b>JERSEY WOOLLY</b>        | <b>REW</b>  | <b>76</b> | <b>77</b>  | <b>78</b> |
|                             | <b>SHADED</b>   | <b>79</b> | <b>80</b>  | <b>81</b> |
|                             | <b>AOC</b>  | <b>82</b> | <b>83</b>  | <b>84</b> |
| <b>FLEMISH GIANT</b>        | <b>BRC STEEL</b>  | <b>85</b> | <b>86*</b> | <b>87</b> |
| <b>FLEMISH INTERMEDIATE</b> | <b>BRC STEEL</b>  |           |            | <b>88</b> |
|                             | <small>*Flemish Giant Junior is under 6 months.<br/>Adult 6 months of age and over.</small> |           |            |           |
| <b>AOV FANCY</b>            | <b>AOC</b>  | <b>89</b> | <b>90</b>  | <b>91</b> |

**RABBIT FANCIERS SOCIETY OF NSW INC**

| <b><u>LOP SECTION</u></b> |                          |            |             |             |
|---------------------------|--------------------------|------------|-------------|-------------|
| <b>BREED</b>              | <b>COLOUR</b>            | <b>K</b>   | <b>J</b>    | <b>A</b>    |
| <b>CASHMERE</b>           | <b>REW</b>               | <b>101</b> | <b>102</b>  | <b>103</b>  |
|                           | <b>SELF</b>              | <b>104</b> | <b>105</b>  | <b>106</b>  |
|                           | <b>SHADED</b>            | <b>107</b> | <b>108</b>  | <b>109</b>  |
|                           | <b>AGOUTI</b>            | <b>110</b> | <b>111</b>  | <b>112</b>  |
|                           | <b>TAN PATTERN</b>       | <b>113</b> | <b>114</b>  | <b>115</b>  |
|                           | <b>BUTTERFLY</b>         | <b>116</b> | <b>117</b>  | <b>118</b>  |
|                           | <b>ALL OTHER COLOURS</b> | <b>119</b> | <b>120</b>  | <b>121</b>  |
|                           |                          |            |             |             |
| <b>MINIATURE CASHMERE</b> | <b>REW</b>               | <b>122</b> | <b>123</b>  | <b>124</b>  |
|                           | <b>SELF</b>              | <b>125</b> | <b>126</b>  | <b>127</b>  |
|                           | <b>SHADED</b>            | <b>128</b> | <b>129</b>  | <b>130</b>  |
|                           | <b>AGOUTI</b>            | <b>131</b> | <b>132</b>  | <b>133</b>  |
|                           | <b>TAN PATTERN</b>       | <b>134</b> | <b>135</b>  | <b>136</b>  |
|                           | <b>BUTTERFLY</b>         | <b>137</b> | <b>138</b>  | <b>139</b>  |
|                           | <b>ALL OTHER COLOURS</b> | <b>140</b> | <b>141</b>  | <b>142</b>  |
|                           |                          |            |             |             |
| <b>DWARF</b>              | <b>REW</b>               | <b>143</b> | <b>144</b>  | <b>145</b>  |
|                           | <b>SELF</b>              | <b>146</b> | <b>147</b>  | <b>148</b>  |
|                           | <b>SHADED</b>            | <b>149</b> | <b>150</b>  | <b>151</b>  |
|                           | <b>AGOUTI</b>            | <b>152</b> | <b>153</b>  | <b>154</b>  |
|                           | <b>TAN PATTERN</b>       | <b>155</b> | <b>156</b>  | <b>157</b>  |
|                           | <b>BUTTERFLY</b>         | <b>158</b> | <b>159</b>  | <b>160</b>  |
|                           | <b>ALL OTHER COLOURS</b> | <b>161</b> | <b>162</b>  | <b>163</b>  |
|                           |                          |            |             |             |
| <b>GERMAN</b>             | <b>REW</b>               | <b>164</b> | <b>165</b>  | <b>166</b>  |
|                           | <b>AGOUTI</b>            | <b>167</b> | <b>168</b>  | <b>169</b>  |
|                           | <b>ALL OTHER COLOURS</b> | <b>170</b> | <b>171</b>  | <b>172</b>  |
|                           |                          |            |             |             |
| <b>MINIATURE</b>          | <b>REW</b>               | <b>173</b> | <b>174</b>  | <b>175</b>  |
|                           | <b>SELF</b>              | <b>176</b> | <b>177</b>  | <b>178</b>  |
|                           | <b>SHADED</b>            | <b>179</b> | <b>180</b>  | <b>181</b>  |
|                           | <b>AGOUTI</b>            | <b>182</b> | <b>183</b>  | <b>184</b>  |
|                           | <b>TAN PATTERN</b>       | <b>185</b> | <b>186</b>  | <b>187</b>  |
|                           | <b>BUTTERFLY</b>         | <b>188</b> | <b>189</b>  | <b>190</b>  |
|                           | <b>ALL OTHER COLOURS</b> | <b>191</b> | <b>192</b>  | <b>193</b>  |
|                           |                          |            |             |             |
| <b>MINI PLUSH</b>         | <b>AC</b>                | <b>194</b> | <b>195</b>  | <b>196</b>  |
|                           |                          |            |             |             |
| <b>PLUSH</b>              | <b>AC</b>                | <b>197</b> | <b>198</b>  | <b>199</b>  |
|                           |                          |            |             |             |
| <b>AOV LOP</b>            | <b>AOC</b>               | <b>200</b> | <b>200A</b> | <b>200B</b> |
|                           |                          |            |             |             |

## RABBIT FANCIERS SOCIETY OF NSW INC

| <b>FUR SECTION</b>              |  |            |             |            |
|---------------------------------|--|------------|-------------|------------|
| <b>BREED</b>                    | <b>COLOUR</b>  | <b>K</b>   | <b>J</b>    | <b>A</b>   |
| <b>BRITISH GIANT</b>            | <b>WHITE</b>   | <b>201</b> | <b>202</b>  | <b>203</b> |
|                                 | <b>AGOUTI</b>  | <b>204</b> | <b>205</b>  | <b>206</b> |
|                                 | <b>BLACK-BLUE,OPAL</b>   | <b>207</b> | <b>208</b>  | <b>209</b> |
|                                 | <b>ALL OTHER COLOURS</b>   | <b>210</b> | <b>211</b>  | <b>212</b> |
| <b>CALIFORNIAN</b>              | <b>ALL COLOURS</b>   | <b>213</b> | <b>214</b>  | <b>215</b> |
| <b>CHINCHILLA</b>               | <b>CHINCHILLA</b>  | <b>216</b> | <b>217</b>  | <b>218</b> |
| <b>CHINCHILLA GIGANTA</b>       | <b>CHINCHILLA</b>  | <b>219</b> | <b>220*</b> | <b>221</b> |
|                                 | <small>*Chin Gi Junior is under 6 months. Adult 6 months and over.</small> |            |             |            |
| <b>FOX</b>                      | <b>BLACK – CHOCOLATE</b>   | <b>222</b> | <b>223</b>  | <b>224</b> |
|                                 | <b>BLUE – LILAC</b>  | <b>225</b> | <b>226</b>  | <b>227</b> |
| <b>NEW ZEALAND WHITE</b>        | <b>REW</b>   | <b>228</b> | <b>229</b>  | <b>230</b> |
| <b>SABLE</b>                    | <b>ALL COLOURS</b>   | <b>231</b> | <b>232</b>  | <b>233</b> |
| <b>SATIN</b>                    | <b>IVORY</b>   | <b>234</b> | <b>235</b>  | <b>236</b> |
|                                 | <b>SELF</b>  | <b>237</b> | <b>238</b>  | <b>239</b> |
|                                 | <b>SHADED</b>  | <b>240</b> | <b>241</b>  | <b>242</b> |
|                                 | <b>AGOUTI</b>  | <b>243</b> | <b>244</b>  | <b>245</b> |
|                                 | <b>TAN PATTERN</b>   | <b>246</b> | <b>247</b>  | <b>248</b> |
|                                 | <b>ALL OTHER COLOURS</b>   | <b>249</b> | <b>250</b>  | <b>251</b> |
| <b>SMOKE PEARL</b>              | <b>Siamese/Martin</b>  | <b>252</b> | <b>253</b>  | <b>254</b> |
| <b>SWISS FOX</b>                | <b>WHITE</b>   | <b>255</b> | <b>256</b>  | <b>257</b> |
|                                 | <b>SELF</b>  | <b>258</b> | <b>259</b>  | <b>260</b> |
|                                 | <b>SHADED</b>  | <b>261</b> | <b>262</b>  | <b>263</b> |
|                                 | <b>AGOUTI</b>  | <b>264</b> | <b>265</b>  | <b>266</b> |
|                                 | <b>ALL OTHER COLOURS</b>   | <b>267</b> | <b>268</b>  | <b>269</b> |
| <b>MINIATURE SATIN</b>          | <b>IVORY</b>   | <b>270</b> | <b>271</b>  | <b>272</b> |
|                                 | <b>AOC</b>   | <b>273</b> | <b>274</b>  | <b>275</b> |
| <b>DEILENAAR</b>                | <b>BRC COLOUR</b>  | <b>276</b> | <b>277</b>  | <b>278</b> |
| <b>AOV FUR - Alaska</b>         | <b>Black</b>   | <b>279</b> | <b>280</b>  | <b>281</b> |
| <b>AOV FUR - Perflee</b>        | <b>Opal</b>  | <b>282</b> | <b>283</b>  | <b>284</b> |
| <b>AOV FUR - Squirrel</b>       | <b>Squirrel</b>  | <b>285</b> | <b>286</b>  | <b>287</b> |
| <b>AOV FUR - Thuringer</b>      | <b>Sooty Fawn</b>  | <b>288</b> | <b>289</b>  | <b>290</b> |
| <b>AOV FUR – Blanc De Hotot</b> | <b>AOC</b>   | <b>291</b> | <b>292</b>  | <b>293</b> |

**Intermediate age group for British Giant is 6 months – 11 months  
(Please state on entry form the DOB) -ANRCI standard**

## RABBIT FANCIERS SOCIETY OF NSW INC

| <b>REX SECTION</b>           |                                |            |            |            |
|------------------------------|--------------------------------|------------|------------|------------|
| <b>BREED</b>                 | <b>COLOUR</b>                  | <b>K</b>   | <b>J</b>   | <b>A</b>   |
| <b>STANDARD REX</b>          | <b>ERMINE</b>                  | <b>301</b> | <b>302</b> | <b>303</b> |
|                              | <b>SELF</b>                    | <b>304</b> | <b>305</b> | <b>306</b> |
|                              | <b>SHADED</b>                  | <b>307</b> | <b>308</b> | <b>309</b> |
|                              | <b>TAN PATTERN</b>             | <b>310</b> | <b>311</b> | <b>312</b> |
|                              | <b>AGOUTI</b>                  | <b>313</b> | <b>314</b> | <b>315</b> |
|                              | <b>ORANGE</b>                  | <b>316</b> | <b>317</b> | <b>318</b> |
|                              | <b>ALL OTHER COLOURS</b>       | <b>319</b> | <b>320</b> | <b>321</b> |
|                              |                                |            |            |            |
| <b>MINIATURE REX</b>         | <b>ERMINE</b>                  | <b>322</b> | <b>323</b> | <b>324</b> |
|                              | <b>SELF</b>                    | <b>325</b> | <b>326</b> | <b>327</b> |
|                              | <b>SHADED</b>                  | <b>328</b> | <b>329</b> | <b>330</b> |
|                              | <b>TAN PATTERN</b>             | <b>331</b> | <b>332</b> | <b>333</b> |
|                              | <b>AGOUTI</b>                  | <b>334</b> | <b>335</b> | <b>336</b> |
|                              | <b>ORANGE</b>                  | <b>337</b> | <b>338</b> | <b>339</b> |
|                              | <b>BROKEN</b>                  | <b>340</b> | <b>341</b> | <b>342</b> |
|                              | <b>ALL OTHER COLOURS</b>       | <b>343</b> | <b>344</b> | <b>345</b> |
|                              |                                |            |            |            |
| <b>SATIN REX</b>             | <b>AOC</b>                     | <b>346</b> | <b>347</b> | <b>348</b> |
|                              |                                |            |            |            |
| <b>AOV REX</b>               | <b>AOC</b>                     | <b>349</b> | <b>350</b> | <b>351</b> |
|                              |                                |            |            |            |
| <b>UNRUNG</b>                | <b>ALL AGES</b>                |            |            | <b>401</b> |
| <b>OWNER BRED</b>            | <b>ALL AGES</b>                |            |            | <b>404</b> |
|                              |                                |            |            |            |
| <b>HANDLER UNDER 6</b>       | <b>3-6 YEARS</b>               |            |            | <b>410</b> |
| <b>HANDLER UNDER 10</b>      | <b>7-10 YEARS</b>              |            |            | <b>411</b> |
| <b>HANDLER UNDER 16</b>      | <b>11-16 YEARS</b>             |            |            | <b>412</b> |
| <b>ADULT HANDLER</b>         | <b>OVER 16 YEARS OF AGE</b>    |            |            | <b>413</b> |
| <b>NOVICE EXHIBITOR</b>      | <b>NEW MEMBERS*</b>            |            |            | <b>414</b> |
| <b>CHAMPION OF CHAMPIONS</b> | <b>ALL BREEDS, ALL AGES**</b>  |            |            | <b>415</b> |
| <b>PET RABBIT</b>            | <b>ALL BREEDS, ALL AGES***</b> |            |            | <b>416</b> |

\* Novice exhibitor – for new members within their first 2 years of showing and not won an award higher than a group award.

\*\* Champion of Champions – eligible for members only. Championships must be claimed before entering.

\*\*\* Pet Rabbit – Open to all rabbits wanting to compete for Best Pet Rabbit.

| <b>NON STANDARD BREEDS AND BREEDS IN DEVELOPMENT</b> |  |            |            |            |
|--|--|------------|------------|------------|
|  |  | <b>K</b>   | <b>J</b>   | <b>A</b>   |
| <b>ALL BREEDS***</b>                                 |  | <b>501</b> | <b>502</b> | <b>503</b> |
|  |  |            |            |            |

**\*\*\* NOT ELIGIBLE FOR CC'S**

# AGE CLASSIFICATIONS

**KITTEN: OVER 10 WEEKS OF AGE AND UNDER 14 WEEKS**

**JUNIOR: 14 WEEKS OF AGE AND UNDER 5 MONTHS\***

**ADULT: OVER 5 MONTHS OF AGE** with the exception of Flemish Giant and Chinchilla Giganta shall be 6 months and over.

\* Flemish Giant and Chinchilla Giganta shall be under 6 months for Junior age class.

# COLOUR GUIDE

## Colour definitions – Fur, Fancy & Lop only

**Red eyed white (REW)** = as pure white as possible with ruby red eye colour

**Ivory** = (specific to Satins), eye colour red or blue

**Self** = black, blue, brown/chocolate/havana, lilac, blue eyed white (BEW)

**Shaded** = siamese sable (dark, medium or light), smoke pearl/siamese smoke, seal point, blue point, iron grey, chocolate tort, sooty fawn/tortoiseshell, beige.

**Tan pattern** = fox, otter and tan (in black, blue, chocolate or lilac), marten sable (light, medium or dark), smoke pearl marten (light, medium or dark)

**Any other colour (AOC)** = dalmation & broken pattern (in bi-colour or tri-colour), harlequin patterns, himalayan.

**Agouti pattern** = agouti/castor/brown grey, opal, lynx, chinchilla, cinnamon, squirrel

**Any other colour (AOC)** = orange, fawn, red, steel (dark, light or dark steel grey), himalayan, butterfly pattern, harlequin patterns or any other colour (not already mentioned) so long as it conforms to the normal pattern of accepted colours of other breeds excluding broken pattern.

## Colour definitions – Rex & Mini Rex only

**Ermine** = as pure white as possible with ruby red eye colour

**Self** = black, blue, havana, lilac, nutria

**Shaded** = siamese sable, siamese smoke pearl, seal, tortoiseshell

**Tan pattern** = marten sable, marten seal, Smoke pearl Marten, orange (separate class), fawn, fox, otter and tan (in black, blue, choco-late or lilac)

**Agouti patterned** = agouti (castor), chinrex, cinnamon, lynx, opal



# 2025 Sydney Royal Rabbit Show 17.4.2025

## Major Prizes

provided by the Royal Agricultural Society of NSW and  
The Rabbit Fanciers Society of NSW Inc.



Best Rabbit in Show – Trophy & Rosette

Runner up Best Rabbit in Show – Trophy & Rosette

3rd Best Rabbit in Show – Rosette

Best Fancy Rabbit in Show – Trophy and Sash

Best Lop Rabbit in Show – Trophy and Sash

Best Fur Rabbit in Show – Trophy and Sash

Best Rex Rabbit in Show – Trophy and Sash

Reserve Best Fancy Rabbit in Show – Sash

Reserve Best Lop Rabbit in Show – Sash

Reserve Best Fur Rabbit in Show – Sash

Reserve Best Rex Rabbit in Show – Sash

Best Adult Rabbit in Show – Trophy and Sash

Best Junior Rabbit in Show – Trophy and Sash

Best Kitten Rabbit in Show – Trophy and Sash

Reserve Best Adult Rabbit in Show – Sash

Reserve Best Junior Rabbit in Show – Sash

Reserve Best Kitten Rabbit in Show – Sash

Best Handler Under 6 Years – Rosette

Best Handler Under 10 Years – Rosette

Best Handler Under 16 Years – Rosette

Best Pet Rabbit - Rosette

Best Unrung Rabbit in Show – Rosette

Best Owner Bred in Show - Rosette

Best Long Coat in Show – Rosette

Reserve Best Unrung Rabbit in Show – Rosette

Reserve Best Owner Bred in Show - Rosette

Reserve Best Long Coat in Show – Rosette



# BEST OF BREEDS

## Thank you to our Sponsors

|  |  |
|--|--|
| Angora – Ebony Grove Rabbit Stud         | British Giant – Linda & Kim Stavens      |
| Dutch – Chonico Bunnies                  | Chinchilla Giganta - Pinya's Rabbit Stud |
| English – Sweet Secrets Stud             | RUP Chinchilla Giganta - NHN Stud        |
| Harlequin – Linda & Kim Stavens          | Silver Fox - Bunnysonthehill             |
| RUP Harlequin - Dusti's Bunnies Stud     | Satin - Sweet Secrets Stud               |
| Netherland Dwarf – Samira Stud           | Smoke Pearl - Camelot Stud (TAS)         |
| RUP Netherland Dwarf - Samira Stud       | Swiss Fox - NHN Stud                     |
| Polish – Camelot Stud (TAS)              | Alaska - BellaRome Stud                  |
| Tan – Chonico Bunnies                    | Squirrel - BellaRome Stud                |
| Thrianta – Ebony Grove Rabbit Stud       | Thuringer - BellaRome Stud               |
| Jersey Woolly – Samira Stud              | Perlfee - BellaRome Stud                 |
| RUP Jersey Woolly - Samira Stud          | Blanc De Hotot - NHN Stud                |
| Flemish Giant – NHN Stud                 | Standard Rex - Char Char Rabbitry        |
| RUP Flemish Giant - Dusti's Bunnies Stud | RUP Standard Rex - Pinya's Rabbit Stud   |
| Dwarf Lop – Pinya's Rabbit Stud          | Mini Rex - Bunnysonthehill               |
| RUP Dwarf Lop - NHN Stud                 |  |
| Mini Lop – Char Char Rabbitry            |  |
| Plush Lop – Applegum Rabbitry            |  |
| RUP Plush Lop - Applegum Rabbitry        |  |





# RABBIT FANCIERS SOCIETY of NSW INC

## 2025 SYDNEY ROYAL RABBIT SHOW – THURSDAY 17<sup>th</sup> APRIL 2025



| CLASS    | BREED    | COLOUR | EXHIBIT NAME          | RING NO  | AGE | SEX | D.O.B      | EXHIBITOR    |
|----------|----------|--------|-----------------------|----------|-----|-----|------------|--------------|
| Examples |          |        |                       |          |     |     |            |              |
| 175      | Mini Lop | REW    | Stud Name Rabbit Name | 19K00100 | A   | B   | 5.5.2019   | Owner's Name |
| 314      | Std Rex  | Castor | Stud Name Rabbit Name | 24E00500 | J   | D   | 10.12.2024 | Owner's Name |
|          |          |        |                       |          |     |     |            |              |
|          |          |        |                       |          |     |     |            |              |
|          |          |        |                       |          |     |     |            |              |
|          |          |        |                       |          |     |     |            |              |
|          |          |        |                       |          |     |     |            |              |
|          |          |        |                       |          |     |     |            |              |
|          |          |        |                       |          |     |     |            |              |

NAME \_\_\_\_\_ STUD \_\_\_\_\_

ADDRESS \_\_\_\_\_

PHONE \_\_\_\_\_ EMAIL \_\_\_\_\_ **All information must be provided**

Entries close: 8pm Saturday the 8<sup>th</sup> of March 2025. No late entries will be accepted.  
Entries in word format only by email to [rfs\\_entries@yahoo.com.au](mailto:rfs_entries@yahoo.com.au)

**Entry Fees:** Minimum entry of \$25 will be applied to each exhibitor to cover entry pass to the show. (1-5 entries/classes)  
Main Show 5 star: \$5 per rabbit per class.  
Entries will be capped at \$80 each exhibitor (16 classes and over).

**Receipt for payment must accompany entry form.** Payment to the RFS account BSB 082 365 A/C 692053161. All scratchings and withdrawals must be in writing to the show secretary no later than 8am on the day of judging otherwise a \$40 fine will apply. Please see the schedule for further information on the show.

Payment made of \$ \_\_\_\_\_ with receipt attached Reference \_\_\_\_\_

By submitting this entry I hereby certify that I am the bonafide owner of the rabbits entered hereon. I also certify that none of my stock has been in contact with any infected stock and that I have not suffered losses from any form of disease within the specified quarantine period for such diseases.