

RAS TIMES

JULY 2022 | VOLUME 20-2

A RIGHT ROYAL SHOW

When the Princess Royal
visits Sydney Royal

AND THAT WAS THE SHOW

Twelve days of fun, farming
and food

SRES COMPETITION RESULTS

All the winners in one place

MEET LUCY CULLITON

An artist in residence at the Show



*“We’re away! and the wind whistles shrewd
In our whiskers and teeth;
And the granite-like grey of the road
Seems to slide underneath.”*

ANDREW BARTON (BANJO) PATERSON (1864 - 1941)



PHOTO: NIGEL OWEN, MONDE PHOTO

90
YEARS
R.M. Williams

OWN A PIECE OF AN AUSTRALIAN LEGEND

Introducing our limited edition anniversary collection



R. M. WILLIAMS
EST. 1932, AUSTRALIA

Contents

JULY 2022 | VOLUME 20-2

24



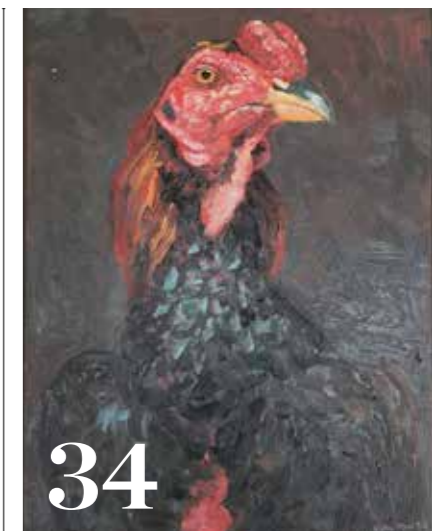
Publisher: Royal Agricultural Society of NSW
ISSN: 1836-6724. 1 Showground Road, Sydney Olympic Park, NSW 2127
T: 02 9704 1111
Email: editor@rasnsw.com.au
Website: www.rasnsw.com.au
Editor: Meredyth Hayes Bell
Art Director: Belinda Third, Cass and Co Creative
Contributors: Vicki Hastrich, Kate Newsome
Photography: Monde Photo: Paul K Robbins, Elliott Housego, Steven Markham & Nigel Owen
Cover: Paul K Robbins, Monde Photo
Print: Brightset Printing

Environment Management. RAS Times is printed on PEFC certified paper. PEFC certified wood and paper products come from environmentally appropriate, socially beneficial and economically viable management of forests. PEFC is an international certification programme promoting responsible forestry which assures consumers that a forest product can be tracked from a certified, managed forest through all steps of processing and production in the supply chain by a Chain of Custody process.



Features

- 13 **And that was the Show**
Twelve days of fun, farming and food
- 20 **SRES Competition Results**
All the winners in one place
- 24 **A right Royal Show**
When the Princess Royal visits Sydney Royal
- 34 **Meet Lucy Culliton**
An artist in residence at the Show



Regulars

- 6 **President's letter**
- 7 **The vine**
- 10 **Chief Executive's column**
- 11 **Flavours**



hundred years and not only safeguarded agriculture in this state but also forged the future of the agricultural industry. We have led the way with education, competitions and events and have provided much-needed support and assistance.

Our history was celebrated this year at the Sydney Royal Easter Show, with our special guest Her Royal Highness, Princess Anne, the Princess Royal certainly putting the Royal into the Show. Whilst this visit was a highlight for many and made Saturday 9 April an incredibly busy day, I am pleased to report that every day of the Show attracted



ON SHOW

The Powerhouse Museum Discovery Centre, located in Castle Hill, has a temporary exhibition dedicated to the Sydney Royal Easter Show with an interesting collection of memorabilia. With free entry and open every Saturday and Sunday until 10 October, 'Remembering the Easter Show' includes medallions from 1883, wool samples from 1893 and 1950s kewpie dolls. Plus some incredible historic photographs, showbags, woodchop sashes, and a pit saw used in the 1930s by world champion axeman and ex Sydney Royal woodchop judge and handicapper Tom Kirk.

The Museums Discovery Centre is located at 172 Showground Rd Castle Hill and is open 10am-4pm every weekend.



As this issue of your RAS Times goes out in the mail the Royal Agricultural Society of NSW is officially marking our 200th anniversary. On 5 July 1822, an idea was born amongst prominent members of the fledgling colony in NSW to form a Society to encourage agricultural production in the community. From that initial meeting held with a small gathering of men, here we are today with a full Council of fifty-three, more than 10,000 Members and a permanent staff hovering around 125.

The RAS has been in existence longer than the Sydney Morning Herald (1831), David Jones (1838), Government House (1845), NSW Parliament (1856), Akubra hats (1874), the stump-jump plough (1876), RM Williams boots (1932) and Driza-Bone coats (1933) to name just a few.

Convicts were still transported to NSW for another twenty-seven years after our establishment, bushrangers stopped travellers along the Parramatta Road route from the west to the settlement at Sydney Cove in our early years, and Sydney was still twenty years away from having a licensed hotel – the Lord Nelson Hotel on Kent Street.

I hope all Members of the RAS have as much pride as I do in belonging to such a remarkable organisation, one that has been there throughout the history of NSW. We have stood strong for two

fantastic numbers and families streamed in through the gates all day every day. In this magazine, you will find a full wrap-up of the Show including results and photos capturing the full celebrations and spectacle of the Show.

We had bicentenary theming across the grounds and in our competitions, making sure every visitor was aware of the role we have played for two hundred years.

As we look back this year it is also vitally important we continue to move forward, and we have successfully launched our Wine, Dairy and Fine Food competitions and events, including Grape Grain and Graze. Following the covid-impacts in both 2020 and 2021, it is immensely satisfying to see full-scale operations again for our Sydney Royal competitions and the events that follow them. I wish all exhibitors the best of luck and remind all consumers to keep an eye out for produce bearing the Sydney Royal medal artwork when selecting wine, cheese, seafood, lamb, pasta and more.

Michael Millner, President
Royal Agricultural Society of NSW

The vine

NEWS | UPDATES | EVENTS



Cheers for 200 years

In 1826 the Agricultural Society judged wine for the first time, however, quality wines were few and far between and the only medal awarded went to Gregory Blaxland for the best sample of Australian wine. This award was possibly the first time one had been given for Australian wine, and farsighted recognition of the role wine was to play in the agricultural development of Australia.

Ever since, wine has also played a significant part in the Sydney Royal competitions run by the Royal Agricultural Society of NSW, ensuring recognition for the winners and a valuable opportunity to shine the spotlight on their wines.

To mark the bicentenary of the RAS, in conjunction

with Wine Selectors, the RAS is proud to present the limited edition Bicentenary Collection featuring six carefully selected wines chosen for their significance to the RAS and the Australian wine industry.

For more information or to order your collection please visit www.rasnw.com.au/200years/commemorative-wine/



GRAPE GRAIN & GRAZE

In wine there is wisdom ... and the KPMG Sydney Royal Wine Show judges are happy to help you wise up. One of Australia's most prestigious wine shows, this annual competition not only attracts entries from the biggest names on the Australian wine scene, but also draws in emerging talent and uncovers the next big thing on the vine.

Once the judging ends the barrels are rolled out, allowing wine enthusiasts to taste from an incredible range of 1800 wines, sample entries from the

Sydney Royal Beer & Cider Show, and satisfy food cravings with Sydney Royal medal-winning food.

It's an afternoon packed with tastings of the 2022 success stories and the new trends in wine, plus the opportunity to pick up a tip or two from our judges. If you're wondering what you should be looking for when perusing the shelves of your favourite bottle shop or online wine supplier, this is your chance to ask the professionals.

With entries pouring in from all over the country, this is your easiest opportunity to guide your palate around the wine regions of Australia and discover for yourself whether a Margaret River chardonnay triumphs over a Barossa shiraz, or a Hunter Valley Semillon over a Yarra Valley pinot noir.

Saturday 6 August – for tickets please visit www.rasnw.com.au/events/grapegraingraze/tickets/



IT'S IN THE BOX

Lifting the lid on a world of agriculture for school students, AG in a Box is the gift teachers have been waiting for. Each box is packed with hands-on learning for students and meets the needs of teachers by aligning perfectly with the NSW school curriculum, and it doesn't cost them a thing. Funded by the Australian Government's Building Landcare Community Capacity Program, AG in a Box delivers on the mission of the Royal Agricultural Society of NSW to engage, educate and entertain our community on the value of sustainable agriculture... and it's the best way to encourage the next generation to get their hands dirty!

From Wellard Primary School in Western Australia's capital city of Perth to Collarenebri Central School, St Spyridon College in Maroubra to Canberra Grammar School and even 500 kms north-west of Brisbane to Monto State School, AG in A Box is making its way around Australia and bringing active agricultural lessons to life in primary and secondary school classrooms.

Visit www.rasnw.com.au/education-resources/ag-in-a-box/ to get AG in a Box into the hands of your students.





The greatest support we can give to agriculture and rural communities is of course the Sydney Royal Easter Show and this year we delivered on every promise to make it a celebration that has been two hundred years in the making.

Our history came to life around the grounds, with heritage classes in competitions, milestones on display outside pavilions and along the Member's entrance, a great display of historical farming machinery and equipment, and a heritage-themed street parade three times a day. As we honoured the past, we also embraced the future, hosting both the State and National Young Farmer Challenge, the National Rural Ambassador Awards, and the Showgirl competition under its new name, The Land Sydney Royal AgShows NSW Young Woman 2022.

The Official Opening of the Show on 9 April was performed by Her Royal Highness, Princess Anne, the Princess Royal, lending the occasion the sense of importance it deserved. The Princess toured the Show and stopped to meet with members of the District Exhibits courts, rural students, and competitors along with officials and other key people. Taking in attractions including Little Hands on the Land and cattle judging, it was a full day and evening for the Princess and Sir Timothy Laurence and a thrill for many Showgoers to see a Royal at the Show.

It was a privilege to be a part of the 2022 Sydney Royal Easter Show and I am proud of my role in steering the organisation through the bicentennial celebrations of the RAS, and I look forward to seeing where the rest of the year takes us.

Brock Gilmour, Chief Executive,
Royal Agricultural Society of NSW

FARM DAYS

The RAS Education team, led by Head of Education Duncan Kendall, run Farm Days workshops every month tailored specifically for the science and technology curriculum for primary and secondary students. Providing a unique hands-on excursion with interactive workshops run in small groups, Farm Days also caters to Home School and Sensory Learning (PWD) groups. This educational program is incredibly important, delivering on the RAS mission to forge the future of agriculture by engaging, entertaining and educating our community.

To organise a Farm Days excursion to Sydney Showground for your class and learn more about RAS Education programs and resources visit www.rasnsw.com.au/events/farm-day-excursions/about/



RURAL ACHIEVERS

The R.M. Williams RAS Rural Achiever Award is a state-wide program recognising future young leaders aged 20-29 years who are working hard to make a significant contribution to their local community and rural Australia.

Those selected to participate enjoy an extensive all-expenses-paid seven-day program of events during the Sydney Royal Easter Show including networking opportunities, a behind-the-scenes look at the Show, and other benefits including prize money and mentoring.

Applications for the 2023 program open in August 2022



15TH ANNUAL PRESIDENT'S MEDAL WINNER



Established in 1981, and founded on a solid tradition of hard work, dedication and passion, Shottesbrooke produces award-winning wines that are distributed around the world. Now in the hands of the second generation, Shottesbrooke continues to grow and proudly produce premium world-class wines of style that truly reflect their origin, with the finest of all being their Single Vineyard Series Adelaide Hills Chardonnay – the wine that took them

all the way to the President's Medal. Announced as the winners of the 15th Annual President's Medal at a gala dinner during the Sydney Royal Easter Show, Managing Director at Shottesbrooke Hamish Maguire described the win as not only a proud moment but also an opportunity to reflect on the work of the entire Shottesbrooke business.



“Every staff member across the organisation has contributed to our success and our story, and (the win) will inspire us to continue to improve and innovate into the future.” *Hamish Maguire*



THE ROYAL AGRICULTURAL SOCIETY OF NSW WOULD LIKE TO THANK ITS 2022 SPONSORS FOR SUPPORTING EXCELLENCE IN AUSTRALIAN AGRICULTURE AND REGIONAL COMMUNITIES

Grand Champion



Strategic Sponsors



Champion



Blue Ribbon



Red Ribbon



Last modified July 2022



And that was the Show

The 2022 Sydney Royal Easter Show, celebrating the bicentenary of the Royal Agricultural Society of NSW, brought together royalty, competitors, exhibitors, Members, staff, volunteers, families, and friends. For twelve days the history of the RAS was on display alongside the finest agricultural and livestock competitions and an entertainment program that celebrated not only the evolution of farming but the fads, fashions and family fun of the Show over the past two centuries.

WORDS MEREDYTH HAYES BELL



DAY 1

Day 1 began with Fleece judging, Rat & Mouse judging, and the always popular Perishable Cooking judging. A crowd gathered in the Arts & Crafts Pavilion to listen and learn about fruitcakes, jam rolls, hot cross buns and the all-important finest ever chocolate cake. The exhibit display cabinets were full to overflowing with delicious looking and beautifully baked cakes, ideally placed right alongside the Rural Students Café which more than benefited from the cleverly coincidental location. The Rural Students Café, run entirely by high school hospitality students from schools including Finley High School in the Riverina and Bundarra Central School in the Northern Tablelands, provides real-world experience in the kitchen and front of house. The students were mentored by professional chefs as they prepared tasting plates of locally inspired treats, and they took all proceeds back to their school for much-needed financial support.

DAY 2

Day 2 brought the Parramatta Street Parade with a 3.30am start and our first real opportunity to step back in time. We loaded a saddle bag with soil from the land on which we held our first Show and transported it to Sydney Olympic Park in a procession of riders on horseback, tractors and wagons... along Parramatta Road following a well-travelled stock route of the 1800s.

The day concluded with the first Grand Parade of the Show and the Official Opening Ceremony complete with the Air Force Roulettes flyover in honour of our special guest Her Royal Highness, Princess Anne, the Princess Royal.

DAY 3

Day 3 was dedicated to the next generation, with Rural Scholars, Rural Achievers and The Land Sydney Royal AgShows NSW Young Woman presentation. The RAS Foundation welcomed their Patron Mr Dennis Wilson to a morning tea for Foundation scholarship recipients to meet with their donors, the Rural Achievers used their powers of persuasion in a debate before a packed Amphitheatre, and the competition formerly known as the Showgirl competition named Molly Wright from Peak Hill as the first The Land Sydney Royal AgShows NSW Young Woman. In between all of this were the Woodchop 600mm World Championship Sawing Contest, Merino judging and the RM Williams Most Versatile Australian Stockhorse competition.





DAY 4

Day 4 delivered Cavy judging, the Hordern and Urquhart and Supreme Beef presentations on the Cattle Judging Lawns, sheep shearing demonstrations, cow milking displays, and the Showjumping Young Rider Grand Prix. Burgers and brisket were sizzling, the Sydney Royal Bar was open, bees were buzzing and making sweet nectar in front of curious crowds, and balloon bikes were bobbing up and passing by.

DAY 5

Day 5 saw the finest oysters and prawns judged in the Sydney Royal Aquaculture competition, two hundred new citizens shed the happiest of tears as they officially became Australians, feathered friends of many breeds assessed in the aviary bird competition, butchery demonstrations and fine food tasting, and amazing displays of horsemanship and working dogs.

DAY 6

Day 6 included a host of Young Judges competitions, Seniors Day and more canines in the ring for the ADVANCE™ Sydney Royal Dog Show. The National Honey Show cabinets were overflowing, little ones got a cuddle from Peppa Pig and the baby goats played around and up and down on their very own mountain. The lunchtime entertainment continued to draw crowds eager for some draught horses and freestyle moto x with their chip-on-a-stick and fresh lemonade.

The day concluded with the first Grand Parade of the Show and the Official Opening Ceremony complete with the Air Force Roulettes flyover in honour of our special guest Her Royal Highness, Princess Anne, the Princess Royal.



DAY 7

Day 7 started with rabbit judging in the lead up to Easter, chicken hatching and an Australorp display in the Poultry Pavilion, bonsai and decorative flower judging, and another full schedule in the Woodchop arena. Plus Angora goats in the judging ring, and bridal flowers up for assessment too. The street parades kept the crowds happy and helped them reminisce, and the evening entertainment was filling the main arena every night.

DAY 8

Day 8 sent feline fanciers to the Pet Pavilion for some cat judging whilst equine enthusiasts watched the judging of Arabian Derivatives and Thoroughbreds. Farmer Dave kept the crowds entertained for the 8th day in a row with his canine all-stars in the Sushi Hub Pet Entertainment Arena, and the Riverina Fresh Working Dairy continued to draw in those eager to see how the milk comes out of the cow.

DAY 9

Day 9 opened with Junior Equestrian and Showjumping before the Big Bush BBQ was fired up once again and the Dairy Paraders entered the Cattle Judging Lawns. The dahlias were judged, Poultry Champions were on display and the Young Farmer Challenge filled the Schmidt Arena. The Pavilions were full as Showgoers shopped for fashion & style and much-needed home & lifestyle products, food on a stick was consumed by all and showbags were moving out of the pavilion as fast as the rides were spinning in the carnival areas.

The National Honey Show cabinets were overflowing, little ones got a cuddle from Peppa Pig and the baby goats played around and up and down on their very own mountain.



DAY 10

Day 10 showcased Boer Goats and Meat & Dual Purpose Sheep along with Alpacas and Skill at Arms. Chicks were patted, farmyard nursery animals were gently petted and fed and heavily photographed, and the woodchoppers sent the chips flying all day in front of an often wildly enthusiastic audience. Street Parades and a Psycho Sideshow upped the entertainment factor, whilst the Feathered Friends Bird Show amazed and educated young and old.

DAY 11

Day 11 brought snakes and reptiles in front of the judges, along with Canine Heroes and the Best Puppy in Show before the crowning of the ADVANCE™ Sydney Royal Dog Show Best in Show. The Police took a Musical Ride, the Wrangler Federation Challenge Rodeo was spectacular once again, and the Young Judges cast their eyes over Alpacas. Dance groups took over the Amphitheatre, marching and pipe bands strolled around the grounds and tiny farmers spent hours in the Paddock at Little Hands on the Land.

DAY 12

Day 12 meant the end was near and children were everywhere enjoying 2-for-1 rides in the carnival and looking for bargains in the Showbag pavilion. The Woolworths Food Farm taught the young ones about life on a farm and how crops become dinner and the District Exhibits display showed them what you can do with produce when you really put your creative mind to it. After the final explosion of colour lit up the night sky, the dancers shuffled away and the Sydney Royal Easter Show balloon began its descent, it was all over. Twelve days of fun, food, farm displays and celebration had come to an end. ■

After the final explosion of colour lit up the night sky, the dancers shuffled away and the Sydney Royal Easter Show balloon began its descent, it was all over. Twelve days of fun, food, farm displays and celebration had come to an end.



FOR SUPPORTING OUR LOCAL PRODUCERS

Elders was proud to be the major sponsor of the 2022 Elders Sydney Royal Beef Cattle Show and celebrate 200 years of the Royal Agricultural Society of NSW.

Elders would like to congratulate and thank all of our clients who presented their stock at the Elders Sydney Royal Beef Cattle Show. We know how hard our producers work throughout the year to bring the highest quality animals to the show. These animals are reflective of their herd at home and the show allows producers to network with clients and present the nation what they have to offer.

We would also like to congratulate Harry Waters of Elders Gundagai who was awarded the title of ALPA NSW Young Auctioneer after an outstanding performance.

Paul Jameson	Stud Stock Manager NSW	0428 667 998
Nik Hannaford	State Livestock Manager NSW	0417 201 460
Brian Kennedy	Stud Stock Specialist/ Auctioneer	0427 844 047
Lincoln McKinlay	Stud Stock Specialist/ Auctioneer	0419 239 963
Tyla Comerford	Livestock & Stud Stock SSO	0456 801 429
Scott Thrift	Stud Stock Sheep Specialist	0417 660 260
Rachel Pritchard	Stud Stock Sheep Specialist	0472 801 869

Elders Stud Stock NSW

Email: eldersstudstocknsw@elders.com.au
Follow us on facebook: @eldersstudstock





2022 SRES COMPETITION RESULTS

100-YEAR EXHIBITOR AWARDS

Robert & Sandra Brown, Moss Vale NSW
(Dairy Cattle)

Merryville Merino (Wally & George
Merriman), Boorowa NSW
(Merino Sheep)

Julie Van Dyke (Chittick Family) (Horse)



ALPACA

BEST SURI ALPACA IN SHOW
Elimbari Sappo, Googong NSW

BEST HUACAYA ALPACA IN SHOW
Malakai Fireworks ET, Malakai Alpaca
Stud, Miners Rest, VIC

SUPREME CHAMPION SURI FLEECE
Bedrock Charisma, Bedrock Stud

SUPREME CHAMPION HUACAYA FLEECE

Kyona Strobes Legacy, Kyona Stud

**CHAMPION SENIOR HUACAYA
MALE (SHERYL RILEY MEMORIAL
PERPETUAL TROPHY)**
Malakai Ashbourne, Malakai
Alpaca Stud

**MOST SUCCESSFUL HUACAYA
EXHIBITOR IN SHOW (HARRIET
DAVISON PERPETUAL TROPHY)**
Precision, Baynton, VIC

ALPA YOUNG AUCTIONEERS: NATIONAL CHAMPION

William Claridge, Inverell, NSW

ARTS & CRAFTS

THE RAS ART PRIZE
Kasey Sealy, Australian Light, Berowra
Heights, NSW

**THE MARGARET FESQ MEMORIAL
ART PRIZE FOR BEST EXHIBIT
FIGURATIVE PAINTING**
Susanna Chen Chow, Working Harbour
II, Northbridge, NSW

**THE WATT FAMILY PERPETUAL
TROPHY FOR THE BEST
PHOTOGRAPH IN SHOW**
Jacqui Floyd, Full of Wonder,
Normanhurst, NSW

**THE FRANCES BINNIE MEMORIAL
PERPETUAL TROPHY**
Sarah Woodfield, Clarkson's Farm, Rooty
Hill, NSW

**THE ISABEL WATT MEMORIAL
PERPETUAL TROPHY FOR MOST
OUTSTANDING EXHIBIT IN DESIGN
AND EXECUTION IN HAND
WEAVING CLASSES**
Denise Warren, Woman's Jacket in 2 ply
wool handwoven in a plaited twill pattern,
Riverview, NSW

**THE DOROTHY EVANS PERPETUAL
TROPHY FOR THE BEST EXHIBIT IN
CAKE DECORATING & SUGAR ART**
Margarita Tan, Life is an Adventure,
Kellyville Ridge, NSW

**THE MOST SUCCESSFUL PRESERVES
EXHIBITOR PERPETUAL TROPHY**
David Harrold, Kellyville, NSW

**THE AUSTRALIAN GAS COOKING
SCHOOL PERPETUAL TROPHY FOR
THE MOST SUCCESSFUL EXHIBITOR
IN PERISHABLE COOKING CLASSES**
Jo-Anne Wright, Kariong, NSW



**THE HEATHER GIBSON PERPETUAL
TROPHY FOR THE MOST
SUCCESSFUL EXHIBITOR IN NON-
PERISHABLE COOKING**
Barbara Goldman, Normanhurst NSW

**THE WH DAVIES MEMORIAL
PERPETUAL TROPHY FOR THE MOST
MERITORIOUS EXHIBIT IN UNDER
20'S PATCHWORK, APPLIQUE AND
QUILTING**
Jacqueline Cowdery, Castle Cove, NSW

**THE ENA & KEITH STUART-WRIGHT
MEMORIAL ANNUAL TROPHY FOR
THE MOST SUCCESSFUL EXHIBITOR
IN UNDER 20'S PERISHABLE
COOKING**
Tiggy Dolton, Paddington, NSW

AVIARY BIRD

**GRAND CHAMPION AFRICAN
LOVEBIRD**
Colin Isbister, Baulkham Hills, NSW

GRAND CHAMPION BUDGERIGAR
James Baker, Moorebank, NSW

GRAND CHAMPION CANARY
Andrew Christodoulou, Illawong, NSW

GRAND CHAMPION FINCH
Ivan Cindric, Blakehurst, NSW

GRAND CHAMPION PARROT
Karen Glossop, Greenacre, NSW

CATTLE

BEEF

**THE HORDERN PERPETUAL
TROPHY FOR THE SUPREME BEEF
BREED**
PC Royal Roll R017 (PCA R017), Pine
Creek Angus Stud Pty Ltd, Cowra, NSW

KO Jedda K127 (KO K127), KO Angus,
Kangaloon, NSW

**THE URQUHART PERPETUAL
TROPHY FOR THE SUPREME BEEF
EXHIBIT**
PC Royal Roll R017 (PCA R017), Pine
Creek Angus Stud Pty Ltd, Cowra, NSW

**THE RAS SUPREME BEEF
INTERBREED HEIFER**
Diamond Ms Reckoning R447 (CFI
R447), CL Fuller, Cowra, NSW

BREEDERS GROUP INTERBREED
Pine Creek Angus Stud Pty Ltd, Cowra,
NSW

DAIRY

**SUPREME CHAMPION DAIRY
FEMALE**
Bushlea Irwins Jenny (NLK 4468),
Christopher Allen, Cobargo, NSW

**SUPREME INTERMEDIATE
CHAMPION DAIRY FEMALE**
Cairnbrae Casino Daisy (WCN 5401),
Wanstead Jerseys & Llandoverly
Illawarras, Girgarre, VIC

**SUPREME JUNIOR CHAMPION
DAIRY FEMALE**
Rivendell Valentino Rosalie (MRB
5233), Stewart Cole & Rebecca Cole &
Matilda Cole & Indiana Cole, Wagga
Wagga, NSW

PUREBRED STEER & CARCASE

GRAND CHAMPION STEER
Jacob Kerrisk & Caitlin Rodham,
Coolamon, NSW



GRAND CHAMPION CARCASE
Calrossy Anglican School, Tamworth,
NSW

CHAMPION SCHOOL STEER
Calrossy Anglican School, Tamworth,
NSW

CHAMPION SCHOOL CARCASE
Calrossy Anglican School, Tamworth,
NSW

TRADE HOOF & CARCASE

CHAMPION TRADE STEER/HEIFER
Scots All Saints College, Bathurst, NSW

CHAMPION TRADE CARCASE
St Gregory's College, Gregory Hills, NSW

DISTRICT EXHIBITS

**THE ROYAL AGRICULTURAL
SOCIETY OF NSW PERPETUAL
TROPHY**
Northern New South Wales District
Exhibit

DOG

BEST EXHIBIT IN SHOW
Sup.Ch. Triseter Celtic Tartan
(3100328508), Gordon Setter, Mrs M
Thomas, Appin, NSW

BEST PUPPY IN SHOW
Briala Whispering Jack (9100012639),
Dachshund (Miniature Long Haired),
Mrs L K Stevens, Casey, ACT

BEST BABY PUPPY IN SHOW
Maemuki Showtime (2100575950),
Japanese Spitz, Miss K Pinker, Gundaroo,
NSW

FLOWER & GARDEN

**MOST SUCCESSFUL EXHIBITOR
OF SHOW**
Graeme Davis, Ainslie, ACT

THE BANKSIAN MEDAL
Graeme Davis, Ainslie, ACT

BRONZE MEDAL
Janet & Peter Hill, Farrer, ACT

**THE JOHN THOMAS BAPTIST
MEMORIAL MEDAL**
Edward & Meryl Morphett, Emu Plains,
NSW

**MOST SUCCESSFUL EXHIBITOR IN
THE DECORATIVE SECTION**
Mary Fairlie-Cunninghame, Lane Cove
North, NSW



GOAT

BEST ANGORA GOAT IN SHOW
Helene Ypma, Rivers 1906 Angora
196367 R1R906, Brogo, NSW

**GRAND CHAMPION MOHAIR
FLEECE**
Helene Ypma, Brogo, NSW

A Right Royal Show

Making her third trip to the Sydney Royal Easter Show – following visits in 1970 and 1988 - Her Royal Highness Princess Anne, the Princess Royal, packed as much into one day as any other Showgoer.





As the Royal cavalcade pulled up outside the Member's Entrance the sun shone and the rain clouds cleared, and the crowd stepped back in delight to allow the Princess Royal to make her way inside. Undeterred by the constant clicking of cameras, phones flashing and people stopping to stare, our Royal visitor made her way to Little Hands on the Land. Accompanied by Murray Wilton, General Manager Sydney Royal Easter Show, RAS President Michael Millner, and RAS Chief Executive Brock Gilmour... and a few minders and media... it was a traditional start to a day at the Show, an opportunity to learn about the paddock to plate or soil to supermarket story.



The next stop was the Woolworths Fresh Food Dome, with a particular pause at the Champion Fleece cabinets before the Princess took in the spectacular sight of the District Exhibits and had a word or two with the court members responsible for the incredible produce used in each display.



Following the path used by thousands of Showgoers each day the Princess made her way to the RAS Foundation AG Bag stand to learn more about the charitable arm of the RAS, and like so many before her the Princess did not leave empty-handed.

The Rural Students Café was the next location, for a word about their tasting plate and some congratulations to all the young hospitality students taking on the challenge of catering to Show visitors under the watchful eye of professional chefs.





As part of the RAS Bicentenary celebrations, the Good Ole Days display featured old farming machinery along with the bullocks, camels and donkeys early farmers relied on and provided a great lesson for our Royal guest – a chance to see how we broke the back of farming difficulties and began to cultivate the land.

With a particular interest in Shorthorn cattle, it was only right we had them being judged especially for the Princess and she took great delight in talking to the exhibitors and sharing her insights into the breed. It was then a quick visit to meet St John's Ambulance volunteers and the veterinarians who take great care of all livestock on-site during the Show, before witnessing an amazing display by the Riding for the Disabled Association.

No visit to the Show is complete without seeing a Grand Parade and the Princess enjoyed an incredible scene as hundreds of competitors took to the main arena with their alpacas, cattle, horses, goats and more. And the sense of excitement was growing in the stands as

“The Show provides an opportunity for city children to learn about country life, and for country children to proudly show their cattle, sheep and goats in competitions, to compete in equestrian events and arts and crafts, even woodchopping and horticulture.”

all Showgoers took a seat to wait for the biggest moment of all – the opportunity to see Princess Anne enter the main arena in the caleche first used by her family in 1970, and to officially open the 2022 Sydney Royal Easter Show.

“The Show draws whole communities together and serves as a forum for the agricultural industry to share stories with the wider community,” the Princess said.

“The Show provides an opportunity for city children to learn about country life, and for country children to proudly show their cattle, sheep and goats in

competitions, to compete in equestrian events and arts and crafts, even woodchopping and horticulture.”

And finally, the moment had come, the Princess uttered the words we had all been waiting for,

“Thank you for welcoming me here... and it now gives me great pleasure to declare the 2022 Sydney Royal Easter Show open.” ■



TYRRELL'S



FIVE GENERATIONS OF TYRRELL FAMILY WINEMAKING, SINCE 1858.

Crafting award-winning wines for over 160 years.

2013 Winemaker's Selection Vat 1 Semillon,
Best Wine of Show, 2021 KPMG Sydney Royal Wine Show.

Tyrrell's wishes RAS a very happy 200th birthday.
A shared history in quality and excellence.

tyrrells.com.au





Recipient of the JB Fairfax Award for Rural & Regional Journalism and Communications, Kate Newsome grew up on a sheep and cattle farm near Glen Innes in rural NSW and attended the local public high school before making the move to the city and enrolment at the University of Sydney. Studying for her Bachelor of Arts and Bachelor of Advanced Studies (Media and Communications), Kate has her eyes firmly on a career telling the stories of rural communities and addressing the misrepresentation of these communities. Like many in rural communities, her lived experience is one of hardship – through drought, bushfires, the imbalance of opportunities and access to resources, the impact of the pandemic, and she hopes to speak up and use a career in the media to bring greater attention to these issues.

Press Pass: Behind-the-scenes of the Show's Media Centre

Peruse through the expansive pavilions and share the walkways with ribbon-laden cattle. Smell the sawed timber, the overturned mud, the gourmet tasters, and the prize roses. Witness the fierce contests of horticulture, viticulture, aquaculture, and apiculture - some of the finest shows of agriculture all on display at the largest annual ticketed event in Australia: the Sydney Royal Easter Show.

I found out late last year that I would receive the 2022 JB Fairfax Award for Rural and Regional Journalism and Communications. It was a surreal moment that didn't quite hit me until early April when - somewhat drenched by the Sydney rain - I first arrived at the Showground.

Established by John B Fairfax AO, the scholarship aims to support a student with a keen interest in regional and rural affairs. Coming from a farming

family in rural New South Wales, what this award represents deeply resonates with me and my understanding of the media's importance in the country. Journalism is essential to empowering these communities through storytelling. Yet my passion for the media industry stemmed from my first-hand frustration with superficial coverage of rural issues and perspectives.

The scholarship offers a suite of work experience in rural media and communications. It was through this

award that I had the opportunity to be one of the six interns that work with the Sydney Royal Easter Show Media team. The team itself consists of media personnel from the Royal Agricultural Society of NSW (RAS) and their associates from Cox Inall dentsu, a public relations agency that has collaborated on the Show for nearly 25 years.

If you walk through the Giants Stadium vomitory and take the elevator four floors up, you'll find yourself at the

At times, the centre felt like a perfectly staged sitcom with a meticulous cast of characters and effortlessly scripted dialogue.

John B Fairfax Media Centre. Here, the Show media team manages countless networks, journalists and photographers. This is the heart that beats behind it all - behind every Show news article, television segment or magazine spread.

When you walk into the media centre, the first thing that hits you is the view. Slanting glass windowpanes offer a panoramic view of the arena's green turf, speckled with horses, white coat-clad photographers, and flowerpot-edged show jumps. The office is scored by the cacophonous sounds of ringing phones, relentless typing, and the mumbled rehearsals of reporters memorising the afternoon's piece-to-camera.

At times, the centre felt like a perfectly staged sitcom with a meticulous cast of characters and effortlessly scripted dialogue.

We need a quail. No - we need a cavy. Do we know how much milk has been milked? What was the camel's phone number? We've already done that one, what other food have they put on a stick?

You could never be sure what each day would entail.

All the while, I had the pleasure of meeting so many people from different walks of life. It's amazing where a RAS uniform and a press pass can take you (the CWA kitchens, as often as I could manage).

Media would come in each morning with an idea of what stories they wanted, and it was the team's job to assist them. From news networks to morning radio shows, it was fascinating to shadow such an array of media practitioners and to see their wildly different approaches to the same event.

But what I couldn't see was the ever-present yet always distant "desk" which was constantly being referred to by the journos. The desk from which decisions would be made and material would be sent, where producers loomed, and news packages would be edited and put to air.

For every reporter spinning yarns with strangers, or following a story from cattle

property to judging lawn, there were others who would come with a strict story brief dreamt up by some inner-city office to be filled like a prescription.

Always, there was a deadline. But as well as deadlines, I was surprised by the extent to which metropolitan media outlets - like their regional counterparts - were tight on resources. It's hard to build a genuine connection as a reporter if you and your camera operator must be ready to bump-out the moment the election is called.

I remember having a conversation with a network reporter about what stories she'd like to cover during her time at the Show. Although she asserted the personal desire to cover more ag-focused stories, she said it was important to balance that equally with more "colour": the rides, the cute kids, the food on a stick.

Safe to say, I'm mildly biased as someone who grew up going to my local show and having my family pester me saying "the sideshow is only the *side* Show" - a

notion I had originally dismissed as an excuse to not buy me another ticket for the Gravitron.

But with time, I've come to realise the central importance of the Show in representing a cross-section of the regions, and agriculture especially, on a city stage.

The colourful hustle and bustle of the Show is certainly a central part of its identity. However, it's a careful balance for the media to consider. It is important to not sensationalise the Show as a novelty under the guise of making its rural subject matter "palatable" for metropolitan audiences.

As John B Fairfax said, "Quality reporting and thoughtful journalism are essential for informed dialogue and debates around the social, economic, agricultural, and environmental issues that impact our regions."

Media would come in each morning with an idea of what stories they wanted, and it was the team's job to assist them. From news networks to morning radio shows, it was fascinating to shadow such an array of media practitioners and to see their wildly different approaches to the same event.

The Sydney Royal Easter Show provides a key opportunity for the media to access and cover rural stories. It offers the chance to start conversations about what is happening in regional communities and industries: the innovations, the hardships, the resilience.

I know of the challenges faced by media, beholden to the distant desk.

But beyond the frustrations that first sparked my interest in journalism, this experience has given me an immense sense of hope. I have had the privilege of learning from those who understand the media's urgent potential to share authentic rural voices. It's reflected in the stories they choose to tell and the reasons they choose to tell them. ■



A financial helping hand for students

Applications are open for the JB Fairfax Award for Rural & Regional Journalism and Communications.

This national award gives students the chance to undertake three media internships including print and radio, along with a \$10,000 scholarship to help ease the financial worry of higher education. This practical experience provides a launch pad to a career telling the stories from rural and regional Australia.

"The JB Fairfax Award will provide an invaluable foundation to a career in media through the support and internships it provides and will give me the opportunity to make a real difference for communities like mine across rural and regional Australia," says 2022 recipient Kate Newsome.

Go to www.rasnsr.com.au/foundation/scholarships/ to find out more and apply.

Meet Lucy Culliton – the Royal artist

RAS writer Vicki Hastrich interviews renowned Australian artist Lucy Culliton about her unusual role at this year's Show.

WORDS VICKI HASTRICH

Lucy Culliton is herding roosters. She interrupts her train of thought mid our conversation to call out, 'Can you guys go to bed?'

A batch of twenty new roosters arrived a fortnight ago (to go with the 27 Lucy already has), and this is their first day of free ranging out of the pen. The afternoon routine of returning to their enclosure will become second nature to them, but right now they're having trouble finding their way back to the open door.

'You go the other way. Oh, naughty rooster!'

I'm talking to Lucy by phone. I'm on the Central Coast and she's on the high plains of the Monaro on the 18ha property she owns at Bibbenluke. From her paintings of that uncompromising landscape, I can picture her up there, going about her end-of-day chores in the chisel-cold air.

A poultry squabble breaks out in the background. The dog's not helping. 'Kitty, can you come this way, please?'

There's no irritation or shrillness in Lucy's voice, only good-natured energy: cheerful, polite, cajoling.

'Come my way. Good dog, that's terrific.'

Lucy and I met at this year's Sydney Royal Easter Show, just a few days into her appointment as its first-ever Official Artist. Now we're catching up to see what she took away from the experience.

'I got Covid!'

A rapid antigen test on Day Nine of Lucy's Show-long engagement revealed a sinister side to her sniffles. She had to pack up and go home.

She told Arts & Crafts committee members Evan Hughes and Alison Renwick that she had unfinished business and would be coming back next year. Lucy laughs as she relates this to me, 'And nobody said no! I feel like I was cheated of my time. I think we'll all benefit if I have another go next year. I only tipped the iceberg.'

The idea of hosting an Official Artist had been proposed before, but with the



200th anniversary of the RAS this year, it was finally approved as the ideal way to celebrate and record the special occasion of the 2022 Show. Under the scheme, the artist's expenses would be met, with the remainder of the budget going to the purchase of a completed work to add to the RAS collection.

Lucy Culliton was the obvious choice. As one of Australia's most talented and important painters, Lucy's work is held in the National Gallery of Australia, Art Gallery of NSW, Macquarie Bank and Parliament House collections. She has also been a regular finalist in all of Australia's major art prizes, including the Archibald, and a winner of the Portia Geach. But she's also completely connected to the country. Her subject matter and her love of it make her a perfect fit for the Show. Apart from her landscapes, she's known as a wonderful painter of animals (she has a whole menagerie of her own to observe up close at home). She has also painted at agricultural shows in the past, depicting champion exhibits, often in the craft and cookery sections.





Her appreciation of the exhibits is genuine. 'I take it seriously. And I also understand that the person who is exhibiting what I'm painting or drawing... it's not meant to be funny, it's meant to be serious. And if it's a spangled Hamburg, or whatever it is, I want you to know what it is: it's not just a chook. It's a spangled Hamburg. You know, the champion budgie, I'm not going to put someone else's champion ribbon on the wrong budgie. I'm going to have the champion budgie with the ribbon. I take it seriously, and I understand how deadly serious the competitors are.'

Historically, grand champion animals were often painted, and the RAS holds a number of examples in its collection. It's part of Lucy's appeal that as a modern realist she's reviving the tradition and bringing something new to it.

The day I visited the Show to watch Lucy in action she was camped in front of a knitted sculpture of white cockatoos perched in a tree. I could see why the exuberance of the piece would appeal to her as she applied quick brushstrokes of gouache, effortlessly capturing

the energy and whimsy of the knitted cacophony of birds.

When I ask Lucy what it is about the subjects of cakes and craft and domestic animals that keeps drawing her back, she says without hesitation, 'Oh, I love them. Personally. It's something that I like to look at. It's my own personal interest.'

Working in public was a challenge. There was a performative aspect to it; interacting with people while trying to concentrate on the picture she was making before their eyes. But she soon decided to relax and converse with anyone who was interested, getting much better with the crowds as time went on.

'The other thing I discovered while talking to people, including the judges, the stewards, the volunteers – all the people who were there every day in their sections – they do it every year, they all volunteer and do the same job every year. They don't swap jobs. If they steward the woodchop, they steward the woodchop. They take pride in their place and position. And I actually thought maybe I'm just going to become like that.'

Matt Carroll, the announcer in the Flower & Garden section where Lucy had her backroom headquarters, took to calling her the Royal Painter. Lucy loved the title.

'Maybe I'll just turn up year after year and just be the Royal Painter.'

She ventured to most parts of the Showground, making drawings and studies of cattle, sheep, poultry, goats, dogs, guinea pigs, budgies, finches, parrots and canaries. No pigs were exhibited this year because of Japanese encephalitis, and she missed out on rabbits and cats due to her illness. But she made it to woodchop, and the District Exhibits, studies of which she hopes to work up into major oil paintings.

'I was so bummed to be sick. That day I got sick I had intended to have a go at night-time drawing. There were things that I hadn't done before, that I was warming up to doing. There are 80,000 people there on the ground and none of my drawings or paintings showed that. I needed the crowd scenes. I need to show



a bit of the arena with all the people, especially in the evening, and I need to do a bit of the carnival stuff. I just feel that's a package.'

Lucy also intended to sleepover in the horse section.

'That's another scene, a huge part of the Show as well. There's a lifetime of material.'

Lucy would have done the horse section proud. As a student at the National Art School in the 1990s she scooted out after class to visit her horse at the stables at Centennial Park. And up at Bibbenluke she still rides almost daily.

While she's penning her roosters, I tell her over the phone that I think there's a verve and forthrightness in the way she applies her paint that also communicates some kind of country directness. Does she agree?

'Yes,' she says. 'Yeah, I think you can say that. I think you're on the money.'

What I don't say, given I have no Fine Arts credentials, is that I privately think

"Maybe I'll just turn up year after year and just be the Royal Painter." *Lucy Culliton*

of her style as 'living realism'. To me, she seeks to capture the interior essence of a thing, the unique essence that makes a thing exactly what it is. And at the bottom of that, is a celebration of life itself, a joyfulness in the world and all its objects. As if to exist in the world, in any form, is a piece of the rarest good luck which over and over must be noted and praised.

Of the Show, Lucy says, 'I'm still on a high from it.'

She has loads of material to work up and is keen to get on. Down the track when she has enough finished pieces there will be an exhibition.

Kitty the dog is obviously still milling around the bird enclosure.

'So have you got all your roosters shut in now?' I ask.

'Yes, I have. I think I've got them all in.'

They came from a friend who does animal rescue.

'I swapped my Muscovy ducks for her roosters. Ducks are messy. And roosters... again it goes back to the Show. I love a rooster, I just love how they look, it's a total visual... I don't have roosters for any reason except they look good.'

Our conversation has ended. Her 47 roosters are in their pen. Think red comb and crop, patterned feather, burnished chest, multiplied by many. Lucy's visual feast.

Look out for her next year as she completes unfinished business: the Royal artist, leaning in to her easel, three sharp lead pencils poking out of a denim back pocket. ■



What's on

AT SYDNEY SHOWGROUND | SYDNEYSHOWGROUND.COM.AU

GWS GIANTS VS ESSENDON

WEEKEND OF 5 -7 AUGUST

SYDNEY DOG LOVERS SHOW

SATURDAY 6 - SUNDAY 7 AUGUST

Celebrate, connect and learn more about our best friends at the greatest festival in the world dedicated to dog lovers. You can meet & interact with more than 800 dogs represented by 100+ breeds, and shop & save with 1,000s of the latest and greatest products and services to spoil your four-legged friend.

dogloversshow.com.au/sydney/



SYDNEY DISABILITY EXPO

FRIDAY 5 - SATURDAY 6 AUGUST

People with Disability are embracing My Future, My Choice as a way to control how they want to live their lives now and plan for the future. This expo links you with hundreds of product and service providers as well as presenting a range of informative and interactive presentations delivered by industry experts.

sydneydisabilityexpo.com.au

REEF STOCK AUSTRALIA

SATURDAY 6 - SUNDAY 7 AUGUST

Reef Stock Australia - The International Saltwater Aquarium Show is coming to Sydney Showground. From beginners to experts, all your aquarium related questions and queries will be answered, along with a great range of goods and services from rocks and pebbles to the ultimate in aquarium lighting and corals.

reefstock.show/australia/

SYDNEY'S ANNUAL WEDDING EXPO

SUNDAY 14 AUGUST

Full of colour, inspiration, fun and great live entertainment, the Sydney Annual Wedding Expo is an event not to be missed. The hand-picked vendors include florists, gowns, photography, invitations, cars, makeup, fitness, men's suits, shoes, videography, reception venues, honeymoons, marriage celebrants and more.

weddingexposaustralia.com/sydney-wedding-expo/

PREGNANCY BABIES AND CHILDREN'S EXPO

SATURDAY 3 - SUNDAY 4 SEPTEMBER

The Pregnancy Babies & Children's Expo is Australia's trusted early parenting event. With over 30 years of experience, it is a must for all new parents. Showcasing

BIG brands, BEST prices, special offers and the LATEST innovations, all under one roof.

pbcepo.com.au/promo/sydney-expo

HEALTH WELLNESS & FITNESS

SUNDAY 11 SEPTEMBER

The place to go for the latest in fitness, wellness, nutrition, health, psychology, education and more. This is Australia's favourite showcase of wellness solutions and is a unique learning forum for thousands of health-conscious visitors.

healthwellnessfitnessexpo.com.au

KNOCKOUT OUTDOOR - ENTER THE ARENA

SATURDAY 1 OCTOBER

It's been many years in the making, but HSU is finally hosting a monster outdoor festival in Sydney! 40+ artists across 3 areas in and around GIANTS Stadium!

It's the ultimate festival experience and it's going to be the biggest harder styles festival in the southern hemisphere.

hsuevents.com

AUSTRALASIA BUS & COACH EXPO

Wednesday 5 - Thursday 6 October

With free entry, this is excellent opportunity to evaluate and source different products and services all under the one roof, with over \$50 million worth of buses and coaches on display and 100+ booths displaying products, services and tourism information.

busandcoachexpo.com.au

FLUME - PALACES WORLD TOUR

FRIDAY NOVEMBER 18

As one of Australia's biggest-selling international touring artists, Flume has



just announced he will bring his World Tour to Sydney this November 2022, presented by triple j. Supporting Flume on the road in Sydney are these very special guests Caroline Polachek, Channel Tres, Toro y Moi, with special appearance from MAY-A.

sydneyshowground.com.au/events/flume-palaces-world-tour/

ENTER PROMO CODE
RASMENBERS
20% OFF
ADULT TICKETS

NATIONAL 4x4 OUTDOORS SYDNEY SHOW

22-24 JULY 2022 SYDNEY SHOWGROUND 4X4SHOW.COM.AU/SYDNEY

AUSTRALIA'S BIGGEST HAVEN FOR 4X4, CAMPING, AND OUTDOOR ENTHUSIASTS IS COMING TO SYDNEY FOR THE VERY FIRST TIME!

With thousands of products on sale, industry experts, entertainment, competitions, features and activations across three huge days the Sydney 4x4 Show is the perfect place for anyone looking to start their next adventure.



Department of Primary Industries

Growing strong primary industries

DPI was proud to support the 2022 Sydney Royal District Exhibits and Schools District Exhibits Competitions.

Showcasing the excellence of our State's produce, the resilience of our farmers and the pride of our NSW regions.

Congratulations!

Congratulations to the Royal Agricultural Society of NSW on celebrating their 200 year anniversary!



Follow DPI on Facebook & Twitter @NSWDPI to keep up-to-date on all things NSW primary industries or visit dpi.nsw.gov.au





Royal Agricultural Society of NSW